

Das Gesundheitssystem der USA



Vortrag auf der Fachtagung:

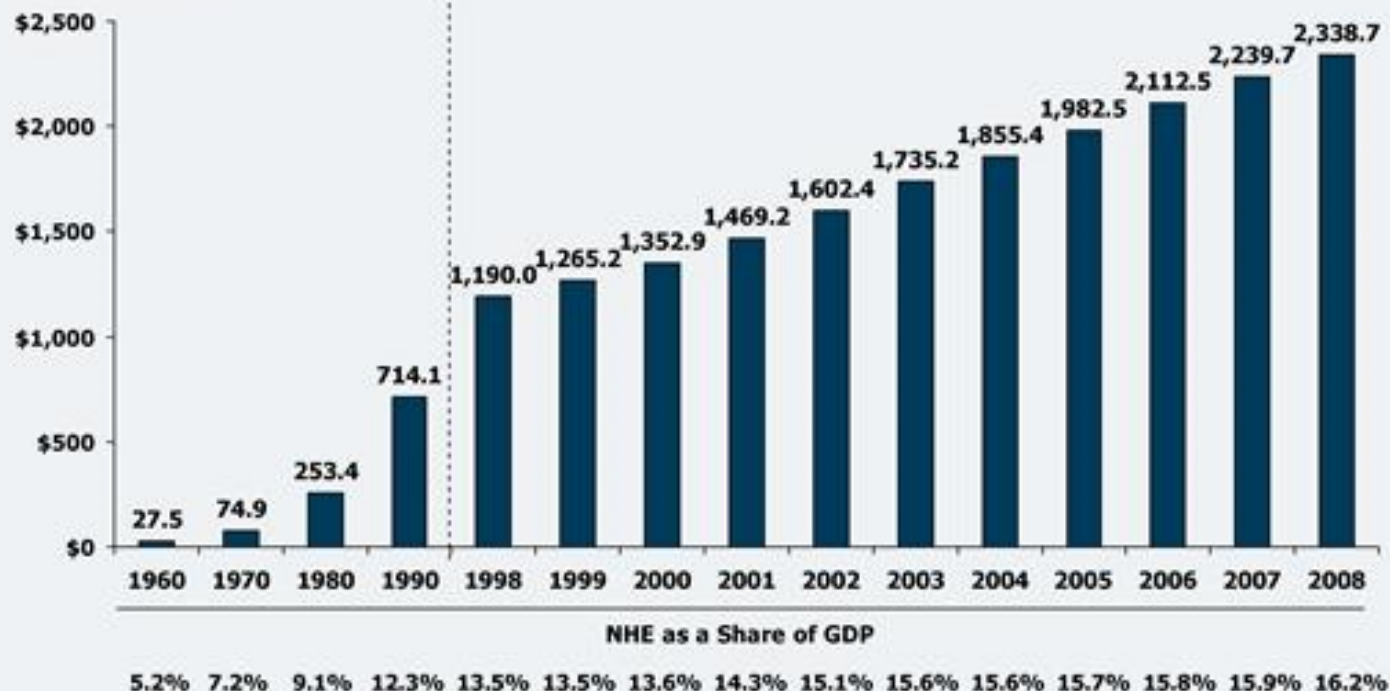
Barack Obama: "The health care status quo is unsustainable."

Zur Reform des amerikanischen und deutschen Gesundheitssystems

Christian Lammert (JFKI / ZENAF)

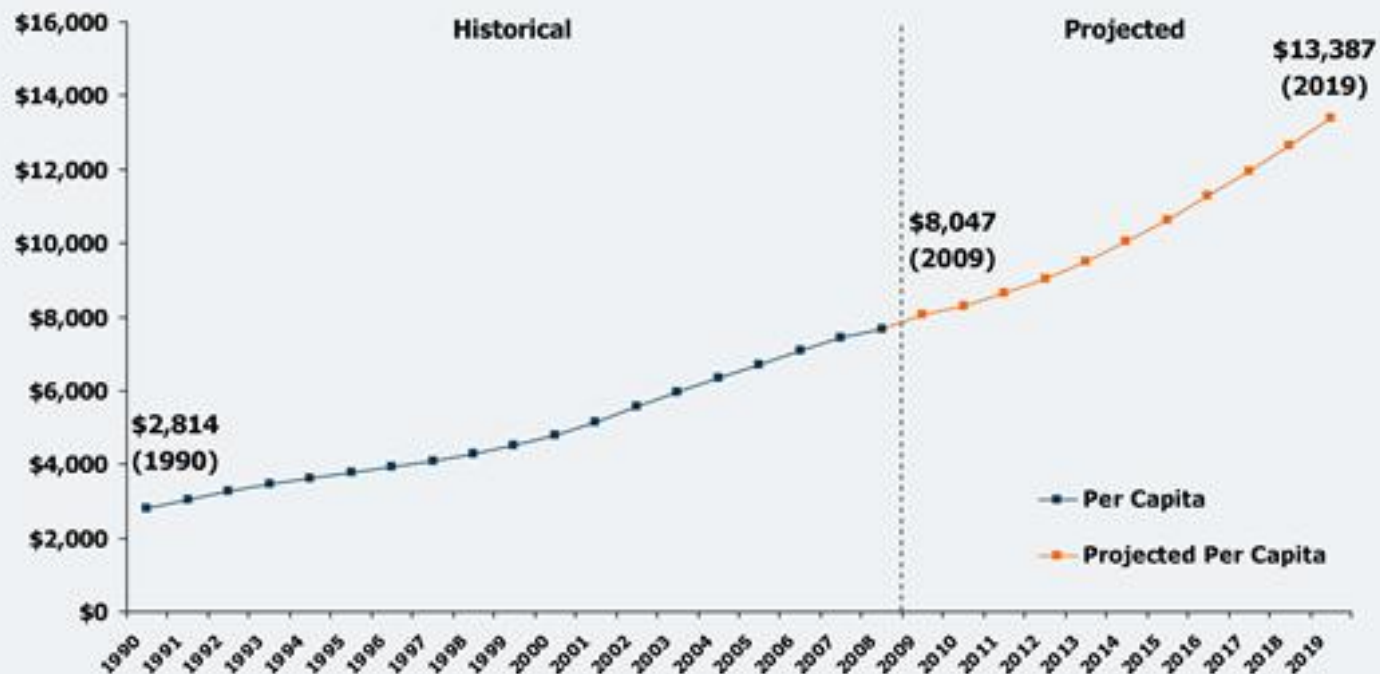
National Health Expenditures and Their Share of Gross Domestic Product, 1960-2008

Dollars in Billions:



Source: Centers for Medicare and Medicaid Services, Office of the Actuary, National Health Statistics Group, at <http://www.cms.hhs.gov/NationalHealthExpendData/> (see Historical; NHE summary including share of GDP, CY 1960-2008; file nhegd08.zip).

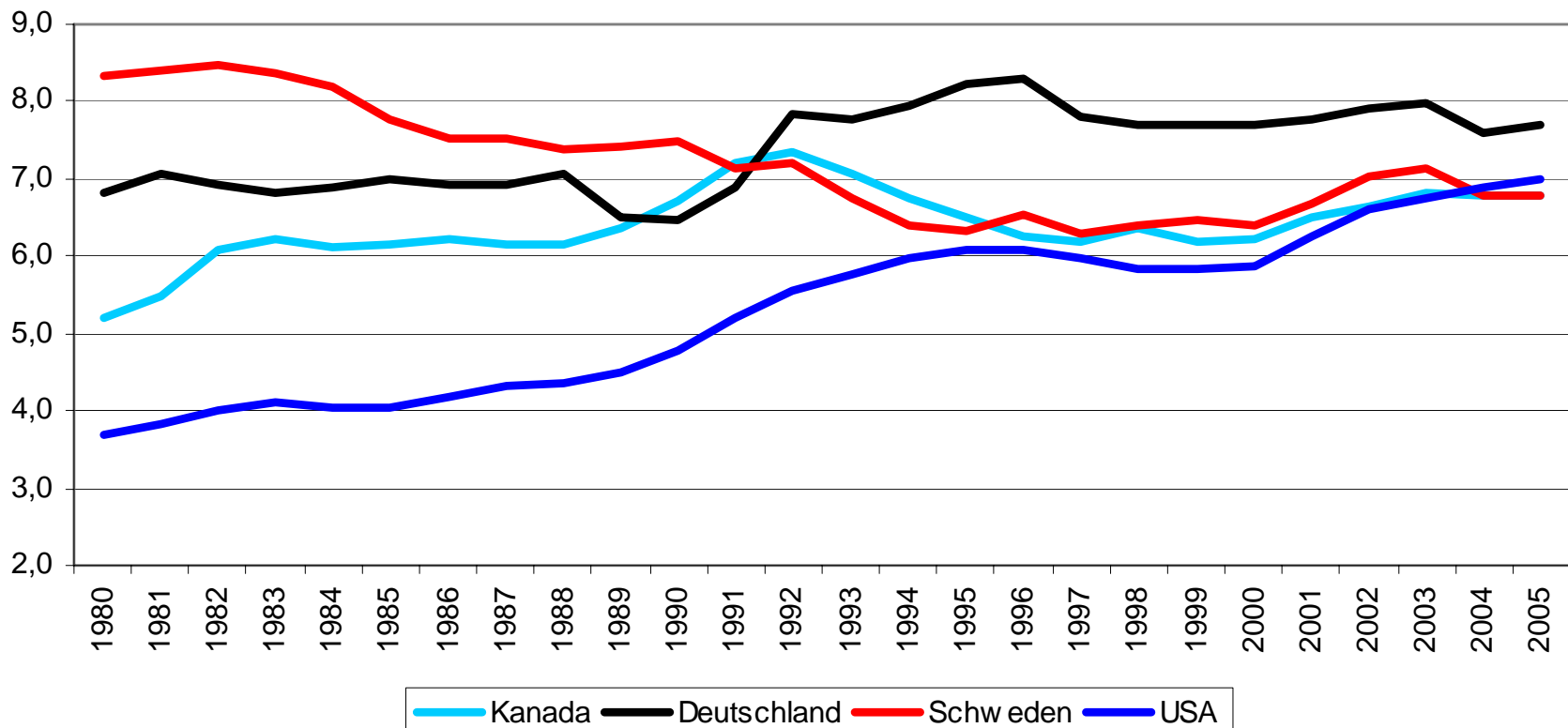
National Health Expenditures Per Capita, 1990-2019



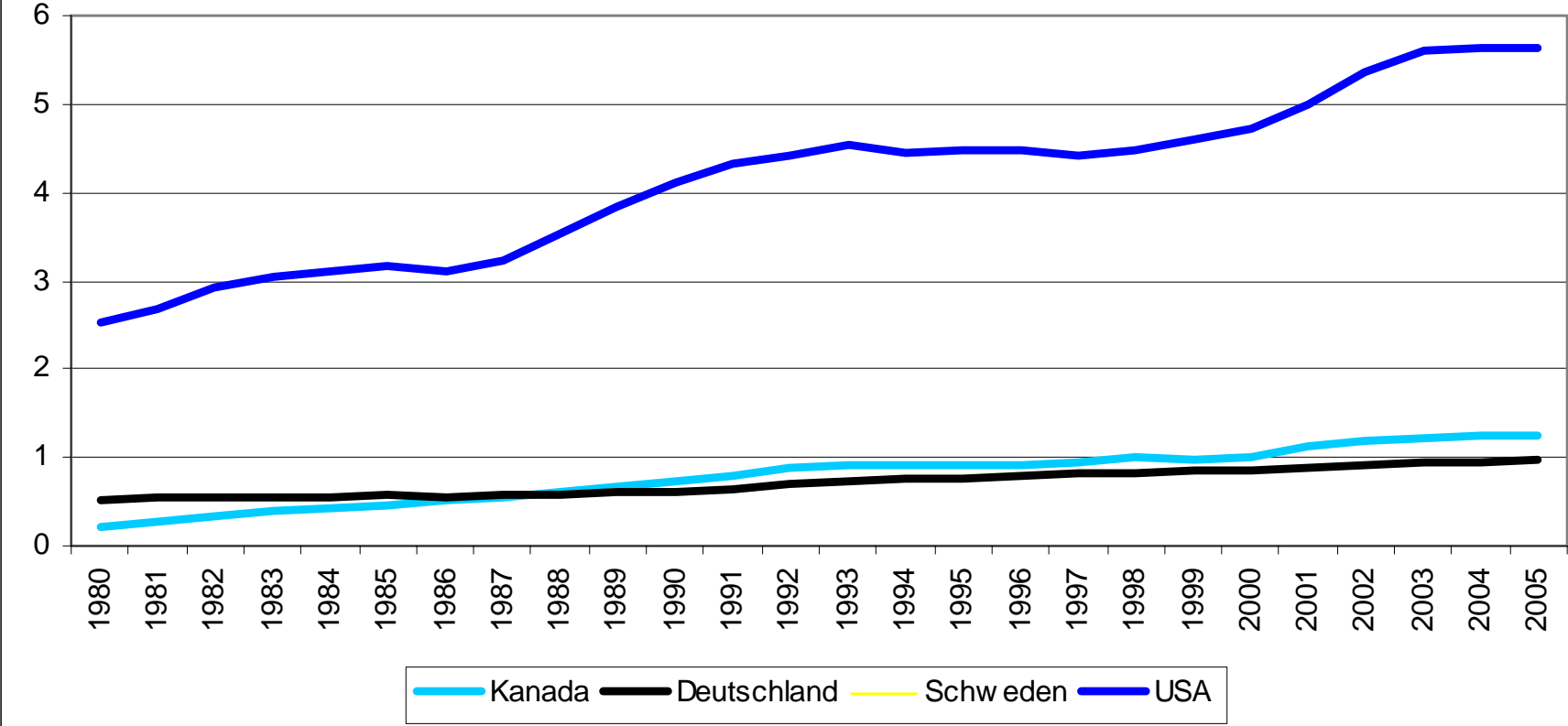
Source: Centers for Medicare and Medicaid Services, Office of the Actuary, National Health Statistics Group, at <http://www.cms.hhs.gov/NationalHealthExpendData/> (Historical data from NHE summary including share of GDP, CY 1960-2008, file nhegdp08.zip; Projected data from NHE Projections 2009-2019, Forecast summary and selected tables, file proj2009.pdf).



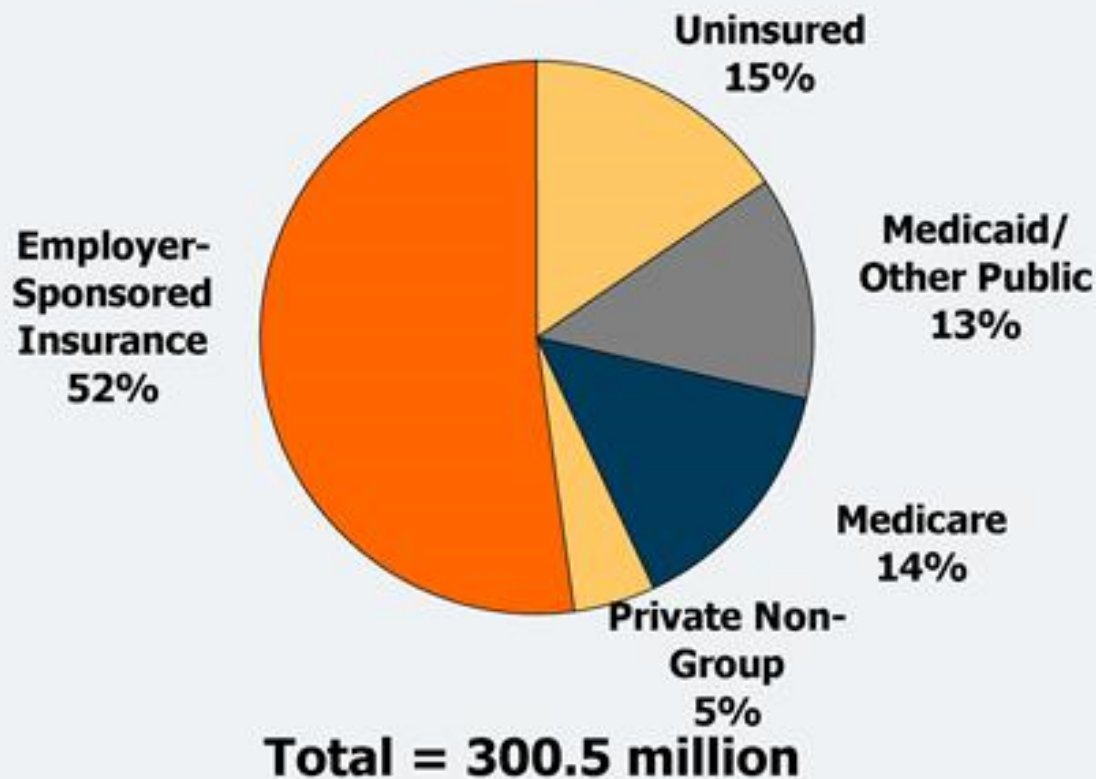
Öffentliche Gesundheitsausgaben (% des BIP), 1980-2005



Freiwillige private Gesundheitsausgaben (% des BIP), 1980-2005



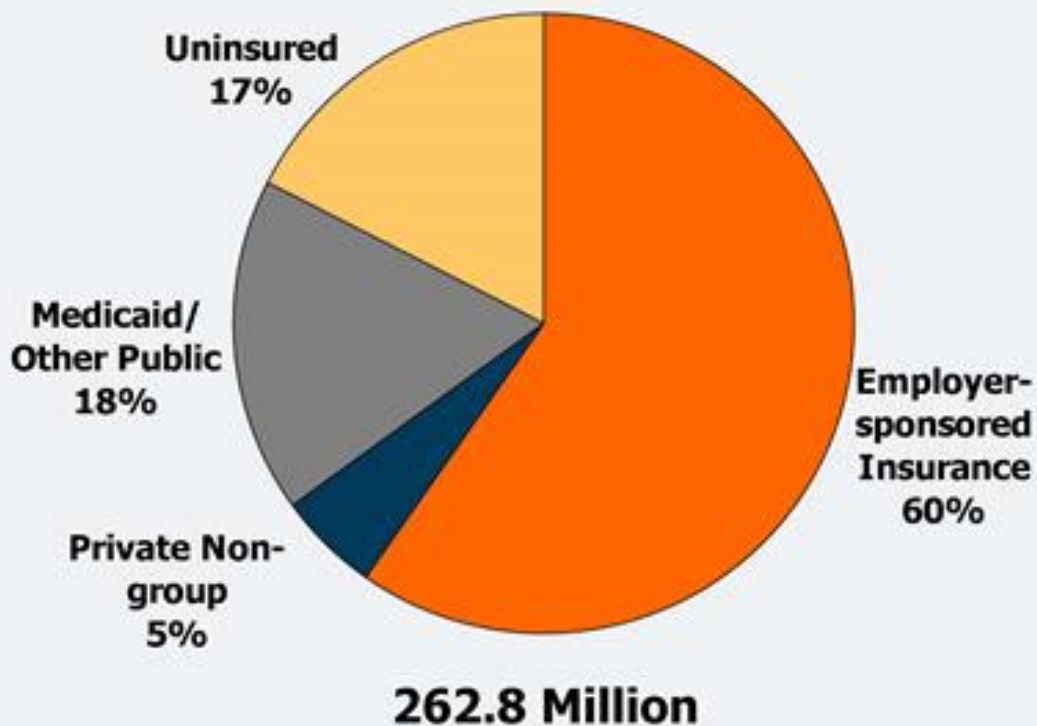
Health Insurance Coverage in the U.S., 2008



NOTE: Includes those over age 65. Medicaid/Other Public includes Medicaid, SCHIP, other state programs, and military-related coverage. Those enrolled in both Medicare and Medicaid (1.9% of total population) are shown as Medicare beneficiaries.

SOURCE: Kaiser Commission on Medicaid and the Uninsured/Urban Institute analysis of March 2009 CPS

Health Insurance Coverage of the Nonelderly Population, 2008



SOURCE: Kaiser Commission on Medicaid and the Uninsured/Urban Institute analysis of 2009 ASEC Supplement to the CPS.

Average Annual Premiums for Single and Family Coverage, 1999-2009



* Estimate is statistically different from estimate for the previous year shown ($p < .05$).

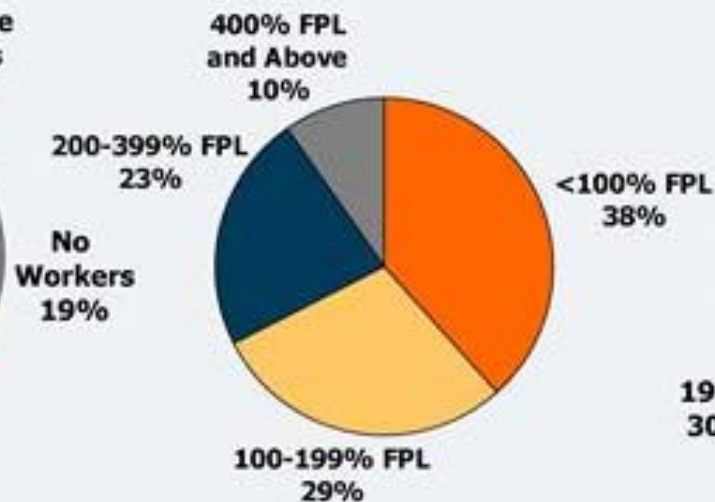
Source: Kaiser/HRET Survey of Employer-Sponsored Health Benefits, 1999-2009.

Characteristics of the Uninsured, 2008

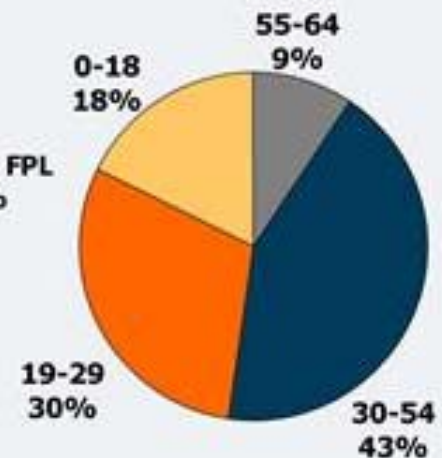
Family Work Status



Family Income



Age



Total = 45.7 million uninsured

The federal poverty level was \$22,025 for a family of four in 2008. Data may not total 100% due to rounding.
SOURCE: KCMU/Urban Institute analysis of 2009 ASEC Supplement to the CPS.